



Legend

- REGULATION LIMIT
- REGULATION AREA
- Additions**
- Hazard Lands
- Wetlands (ELC/MNR)
- Reductions**
- Hazard Lands
- Wetlands (ELC/MNR)
- CLOCA Political Boundary
- Municipality



(c) Copyright. Central Lake Ontario Conservation Authority, 2025.

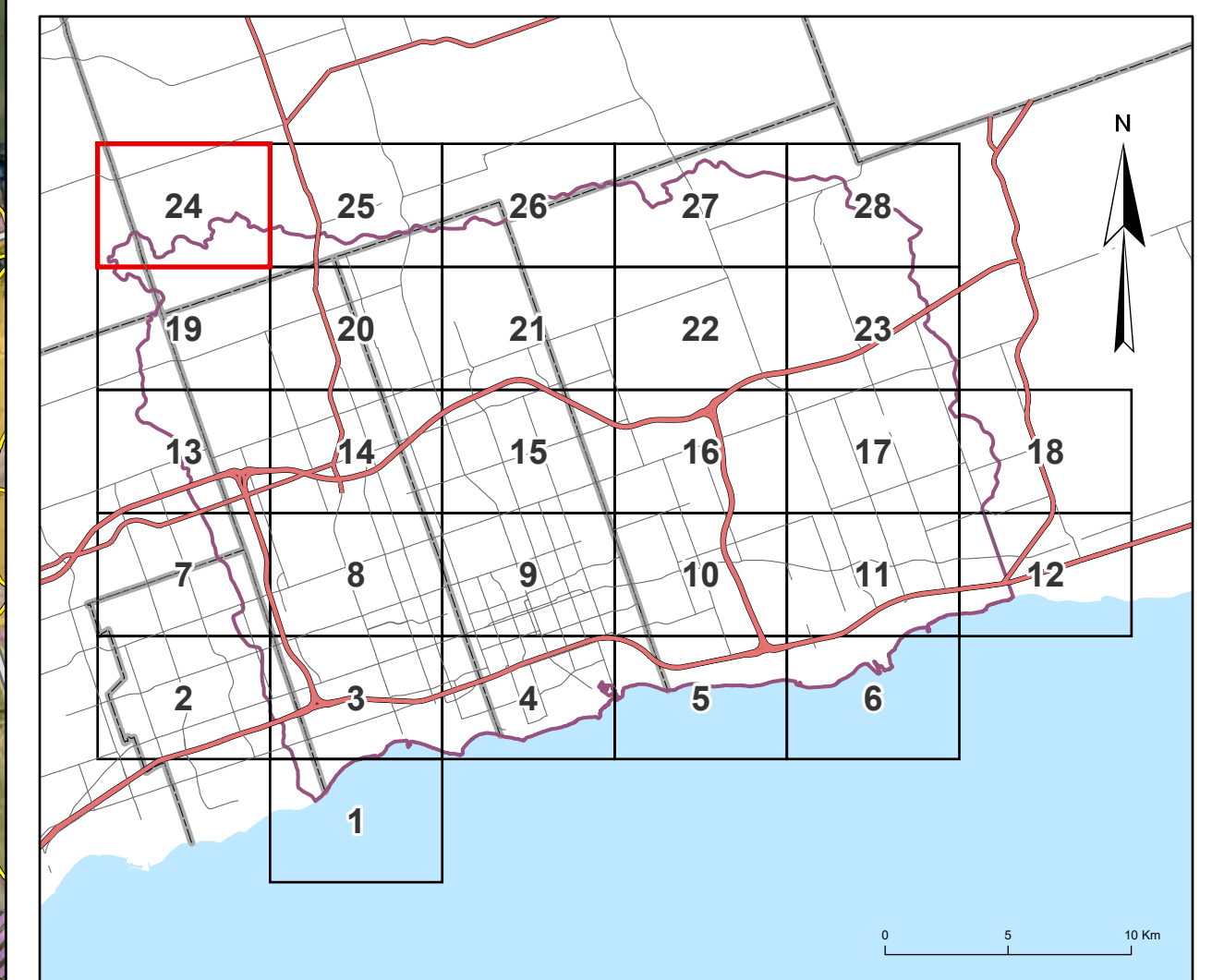
Map Compiled by Central Lake Ontario Conservation Authority, 100 Whiting Avenue, Oshawa, Ontario, L1H 3T3

Source: CLOCA, 2025; Regional Municipality of Durham, 2025; MNR, 2025.
 Orthophotograph: FBS, Flown April 2024 (Licenced through Regional Municipality of Durham)

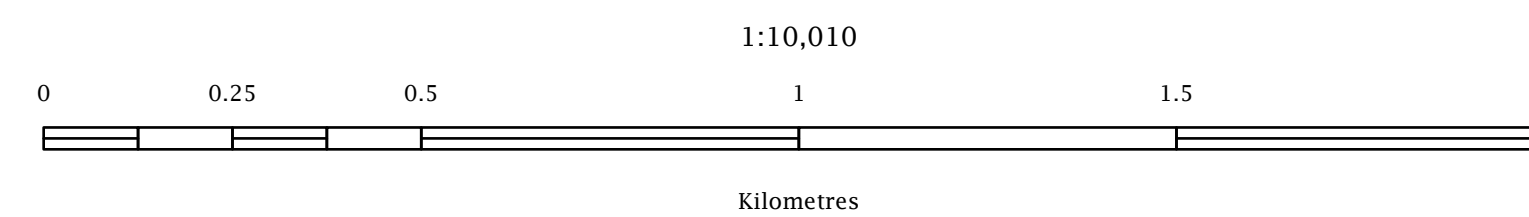
Projection: NORTH AMERICAN DATUM 1983 UNIVERSAL TRANSVERSE MERCATOR (6 DEGREES) PROJECTION, ZONE 17, CENTRAL MERIDIAN (81 DEGREES WEST)

Notice: This Map of Regulated Areas, by reference in s.4 of Ontario Regulation 41/24, depicts areas within the regulatory jurisdiction of CLOCA where development activities are prohibited in the absence of permission by CLOCA. In case of a conflict regarding the boundaries of the regulated areas, as depicted on this map, and those described in statutory text under section 28 of the Conservation Authorities Act and sections 2 and 4 of Ontario Regulation 41/24, the textual description of the boundaries of regulated areas in the Act and Regulation prevail over the visual depiction of areas on this map.

Date Printed: November 14, 2025



THE REGULATION LIMIT IS A COMPILATION OF VARIOUS INFORMATION SOURCES. EXISTING FLOODPLAIN MAPPING AND SHORELINE HAZARD MAPPING WERE PREVIOUSLY PREPARED FOR CLOCA BY ENGINEERING CONSULTANTS. EROSION HAZARDS WERE DETERMINED BY CLOCA STAFF AND ASSIGNED AN ALLOWANCE OF 15 METRES. MNR WETLAND DELINEATIONS WERE PROVIDED BY THE MINISTRY OF NATURAL RESOURCES. ALL OTHER WETLAND DELINEATIONS WERE MAPPED BY CLOCA STAFF USING THE ECOLOGICAL LAND CLASSIFICATION (ELC) SYSTEM. BOTH MNR AND ELC WETLANDS WERE ASSIGNED AN ALLOWANCE OF 30 METRES. FOR MORE INFORMATION CONTACT CLOCA (905-579-0411). ORTHOPHOTOGRAPH: FIRST BASE SOLUTIONS INC., MADE AVAILABLE THROUGH A LICENCE AGREEMENT WITH THE REGION OF DURHAM. - FLOWN APRIL 2024.



NO.	REVISIONS	DATE	NO.	REVISIONS	DATE	APPROVED BY
1	Ontario Regulation 42/06 Approved	February 2006	7	Durham Hazard Lands update. Wetland updates.	September 2016	KL/AK
2	Annual Update	October 2007	8	Triangle Creek, Carleton Creek, Robinson/Taylor and Lynde Creek Floodplain updates. Wetland updates. Shoreline Hazard updates.	October 2025	CJ
3	Blackberry & Spring, Black, Harrosey, Farewell and Lynde Creek Floodplain updates. Wetland updates.	June 2010				DH
4	Black Harrosey Forewell, Carleton and Lynde Creek Floodplain updates. Wetland updates.	February 2012				CJ/DH
5	Beacons, Westside Creek Floodplain updates. Wetland updates.	May 2013				OCT 4/2025
6	Chalk Lake Floodplain updates. Wetland updates. Hazard Lands updates.	May 2015				BM

PROJECT DATE: November 2025
 FILE: \\proj\proj\Central\Conservation\Regulation\2025\Cons_Reg_Mapbook_Series_2025_AdditionalInformationMap\Cons_Reg_Mapbook_Series_2025_AdditionalInformationMap.gpx
 SHEET NO. 28

MAP OF REGULATED AREAS
 (s.28 Conservation Authorities Act, R.S.O. 1990, Chapter C.27
 AND
 s.4 Ontario Regulation 41/24)