

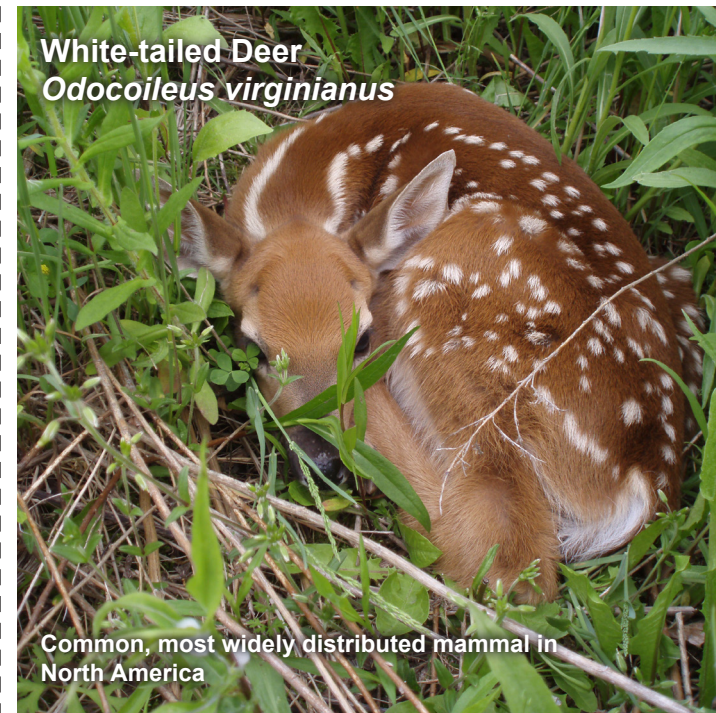
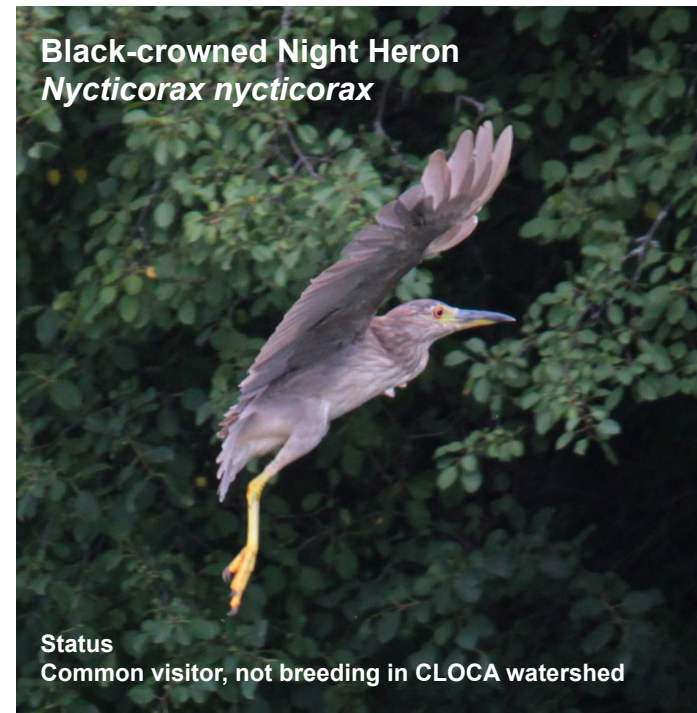
# Did you know...

# Lynde Creek Watershed



## Watershed Flora and Fauna

When you explore local parks and natural areas in the Lynde Creek Watershed, look for these flora and fauna. You can cut these cards to create a handy identification kit.



## What is a Watershed?

A watershed is an area of land drained by a river or creek and its' tributaries into a body of water like a lake. In the Central Lake Ontario Conservation (CLOCA) jurisdiction, an area of 627 square kilometres, we manage 24 watersheds, each one associated with a specific creek. The Lynde Creek Watershed is shown in the map below.



## Lynde Creek Watershed and Subwatersheds

The Lynde Creek and its tributaries drain an area of approximately 130 km<sup>2</sup> from the headwaters where it begins in the Oak Ridges Moraine, down to Lake Ontario. This watershed passes through five municipalities including the Townships of Uxbridge and Scugog, City of Pickering and Towns of Ajax and Whitby.

There are five sub-watersheds within the Lynde Creek, which includes from west to east 1) Kinsale, 2) Heber Down, 3) Ashburn, 4) Myrtle Station and 5) the Lynde Main.

# Lynde Creek Watershed

Lynde Creek Marsh is part of this watershed, located on the Lake Ontario shoreline. The many environmental and social benefits have earned it designation as a Provincially Significant Wetland. Also in this watershed, CLOCA owns and manages 3 Conservation Areas including Crows Pass, Heber Down and Lynde Shores offering visitors the opportunity to connect with nature.

CLOCA's role in maintaining healthy watersheds ensures local municipalities and their residents receive important ecological services and benefits. When a watershed functions well, we can mitigate climate change impacts, control flooding, improve drinking water quality, provide critical wildlife habitat for common and endangered species and green space to benefit people's mental and physical well-being. In addition to wetlands, the Lynde Creek Watershed is home to large forests, meadows, thickets, and valley lands. Land uses across the watershed include urban, agriculture, transportation and greenspace, all of which require sound environmental management practices to directly benefit watershed health.



Green Frog

# Lynde Creek Watershed

## Watershed Plans

**Since 1958, CLOCA has been a leader in watershed management planning, working collaboratively to balance human activities and the natural environment, ensuring watershed health for today and tomorrow.**

**Watershed plans provide a framework to guide our decisions and actions to protect, restore and enhance natural resources to support healthy and resilient communities. The current Lynde Creek watershed plan is a living document that requires regular review in a constantly changing environment.**

**To find out more details about our watershed plans and progress on this undertaking, please visit our website.**

100 Whiting Avenue,  
Oshawa, ON L1H 3T3  
905-579-0411

www.cloca.com  
mail@cloca.com

## Citizen Science

In 2018, CLOCA partnered with BioBlitz, to host a 24 hour inventory of the Lynde Creek watershed by scientists and citizen scientists. The results of this initiative, our first, filled important information gaps on specific terrestrial and aquatic species. The most common species sighted was actually an insect, the Monarch Butterfly, an Endangered Species in Ontario. Other species observed included American Mink, Yellow Warbler and Big Brown Bat, to name a few.



Monarch Butterfly Larva

## Monitoring

At CLOCA we have an Integrated Watershed Monitoring Program to measure watershed health using targets for natural resources to better understand land use impacts imposed on the natural system by humans. The table below highlights some of the targets and our monitoring results from 2012 to 2018 for this specific watershed.

Lynde Creek Watershed	Target	2012	2017
Natural Cover	30.00%	29.16%	29.72% ↑
Wetland Cover	10.00%	10.00%	*9.56% ↓
Riparian Cover	75.00%	Not Comparable	42.00% ↑
Imperviousness	>10.00%	9.20%	11.60% ↑

\*Note decrease due to new transportation infrastructure.

## Success Story: Victoria St. Reconstruction Collaboration

Since 2007, CLOCA has been involved in the review and design of the widening of Victoria Street in Whitby which posed potential impacts to the Lynde Creek Marsh and its overall function. This multi-stakeholder project took many years to 'get the design just right' ensuring the impacts were mitigated and compensation for loss of habitat was accommodated. Some of the environmental design elements incorporated into this project included:

- Protecting migrating and spawning fish populations with specific construction windows;
- Enhancing connectivity under the roadway, with aquatic and terrestrial wildlife passage corridors;
- Creating a new wetland area connected to Lynde Creek providing habitat for wildlife including Yellow Perch, Pumpkinseed and Brook Stickleback fish and the endangered Eastern Pond Mussel;
- Ongoing monitoring of plants and wildlife communities pre and post construction to ensure impacts are managed appropriately.