



**Central
Lake Ontario
Conservation**

100 Whiting Avenue
Oshawa, Ontario
L1H 3T3
Phone (905) 579-0411
Fax (905) 579-0994
Web: www.cloca.com
Email: mail@cloca.com

**PRIVATE LAND TREE & SHRUB PROGRAM
ORDER FORM – for Spring 2012**

Forms available at www.cloca.com or call (905) 579-0411 ext. 124

(This program is for landowners who own a minimum of 2.0 acres within the Central Lake Ontario Conservation watersheds)

Name: _____

Phone #: _____

Complete Mailing Address:

Property Location:

Township _____

Lot _____

Concession _____

Email: _____

Species are available as listed on the back of the order form, while supplies last. Send in your **early bird** orders by **Friday, March 9th, 2012** and get a **FREE** Family General Admission Pass to the Annual Purple Woods Maple Syrup Festival. **All orders must be submitted no later than March 30th, 2012.**

Minimum orders are for **100** seedlings. Please order in multiples of **25** seedlings per species. 2012 prices range from \$0.55 to \$1.20, determined by species.

Pickup by landowners is scheduled for **Friday, April 27th, from 11:00 a.m. to 6:00 p.m. ONLY** at **The NEW Heritage Hall, located at Purple Woods Conservation Area.** (subject to change based on spring frost conditions)

Return tree orders with payment to:

Central Lake Ontario Conservation Authority
100 Whiting Avenue, Oshawa, Ontario L1H 3T3

If paying by **VISA or MasterCard** _____ Expiry Date: _____

Please PRINT card number clearly

ORDER ONLINE TODAY!
www.cloca.com/stewardship/online_tree_sales/

For more information on species selection or planning for tree planting contact Ms. Kathy Luttrell, Terrestrial Resource Analyst at (905) 579-0411 ext. 124 or kluttrell@cloca.com

What we do on the land is mirrored in the water

AVAILABLE NATIVE TREES & SHRUB SPECIES FOR SPRING 2012

(Approximate seedling size: 10cm to 60cm depending on species and availability)

Note: if you would like a species not listed below, please ask, and our staff will try to source it for you.

CONIFEROUS (C) DECIDUOUS (D) WILDLIFE SHRUBS (WS) Specialty Deciduous (SD)

Tree Seedlings Requested:

Species	Number	Unit Cost	Total \$ per Species
White Pine (C)		\$0.55	
Red Pine (C)		\$0.55	
White Spruce (C)		\$0.55	
White Cedar (C)		\$0.55	
Tamarack (C)		\$0.60	
Red Oak (D)		\$0.80	
Silver Maple (D)		\$0.80	
Red Maple (D)		\$0.80	
Red Osier Dogwood (D)		\$0.80	
Nannyberry (WS)		\$1.10	
Highbush Cranberry (WS)		\$1.10	
Sugar Maple (SD)		\$1.10	
Butternut (SD)		\$1.20	
Black Cherry (SD)		\$1.20	
Total # Ordered		Subtotal \$	
		HST (13%)	
		Shipping/ Handling	\$12.00
		Total \$	

Remember before placing your tree order:

- **Minimum order must be 100 trees in total**
- **Please order in multiples of 25 for each species**
- **Payment required at time of order; if we cannot process your order or stock is not available a refund will be issued**

TERMS AND CONDITIONS

The Central Lake Ontario Conservation Authority (CLOCA) endeavours to secure native tree/shrub seedling stock grown from seed that is collected locally, where possible. CLOCA will make every reasonable effort to ensure that tree seedlings are true to name. Substitutions may be recommended if requested stock is not available. Tree seedlings are very sensitive, therefore **CLOCA does not guarantee the survival of the trees after they are picked up by the customer**, but will ensure that handling and storage prior to pickup meet accepted standards.



100 Whiting Avenue
Oshawa, Ontario
L1H 3T3
Phone (905) 579-0411
Fax (905) 579-0994

Please keep this page as a record of your Spring 2012 order

Tree Seedlings Requested:

Species	Number	Unit Cost	Total \$ per Species
White Pine (C)		\$0.55	
Red Pine (C)		\$0.55	
White Spruce (C)		\$0.55	
White Cedar (C)		\$0.55	
Tamarack (C)		\$0.60	
Red Oak (D)		\$0.80	
Silver Maple (D)		\$0.80	
Red Maple (D)		\$0.80	
Red Osier Dogwood (D)		\$0.80	
Nannyberry (WS)		\$1.10	
Highbush Cranberry (WS)		\$1.10	
Sugar Maple (SD)		\$1.10	
Butternut (SD)		\$1.20	
Black Cherry (SD)		\$1.20	
Total # Ordered		Subtotal \$	
		HST (13%)	
		Shipping/ Handling	\$12.00
		Total \$	

Tree Pickup Information:

Time: Friday, April 27th, 11:00 a.m. to 6:00 p.m.

****NEW** Location:** **Heritage Hall located at Purple Woods Conservation Area** – see attached map

TERMS AND CONDITIONS

The Central Lake Ontario Conservation Authority (CLOCA) endeavours to secure native tree/shrub seedling stock grown from seed that is collected locally, where possible. CLOCA will make every reasonable effort to ensure that tree seedlings are true to name. Substitutions may be recommended if requested stock is not available. Tree seedlings are very sensitive, therefore **CLOCA does not guarantee the survival of the trees after they are picked up by the customer**, but will ensure that handling and storage prior to pickup meet accepted standards.

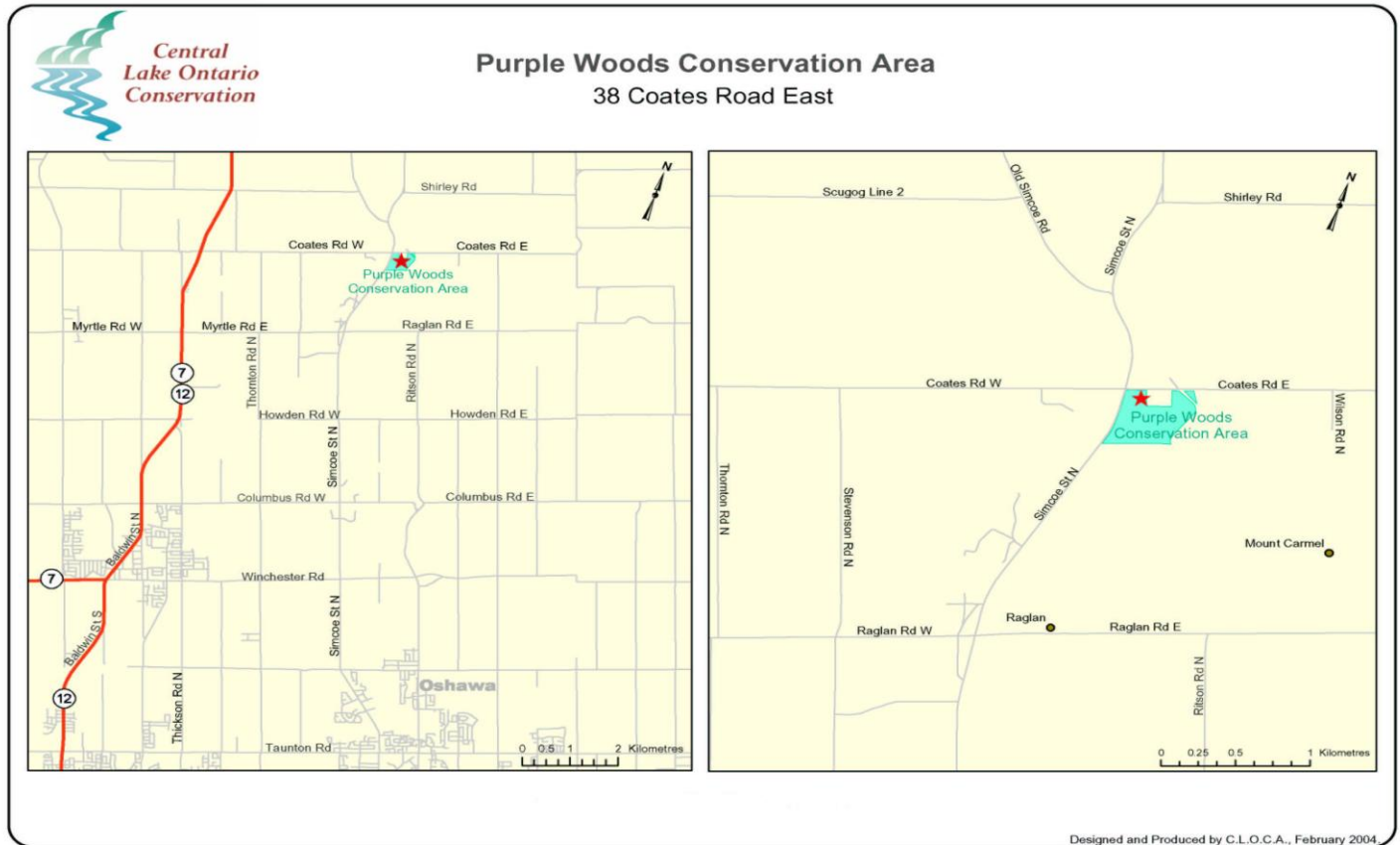
What we do on the land is mirrored in the water

****NEW** Tree Seedling Pickup Location**

Map to Purple Woods Conservation Area

38 Coates Road East, Oshawa (S/E corner of Simcoe Street North & Coates Rd)

(contact number on pickup day only – 905-259-1462)



SEEDLING STORAGE INSTRUCTIONS

Customers should plan to plant their seedlings within 24 hours of pick-up. Planting instructions will be made available at time of pick-up.

On-site storage: Determine how trees will be stored at the planting site before picking up the seedlings. The trees must be protected from sun and wind at all times. When removing seedlings from the package, dip the roots in water before placing the seedlings in a planting bucket with moist sawdust or strips of newspaper.

Short term storage: Seedlings can be stored in a cool, dry (but not below freezing) place, protected from the elements, for 2-3 days. Allow air circulation and do not stack.

Long term storage: Refrigerated storage at 2-3 degrees Celsius can extend storage time for up to two to three weeks if monitored correctly. Deciduous species can be heeled-in loosely in a trench with their roots well covered with soil and mulch and watered regularly until required for planting. Seedlings must be planted before the buds break.

What we do on the land is mirrored in the water